



# Taking you to new dimensions The marketing plan!

Statutory Declaration Pursuant to Sections 55 – 55.1 of the Competition Act of Canada

“There are no guarantees regarding income. Our estimate of what the typical participant is likely to earn is approximately \$1,420 per year. A participant, for the purposes of this estimate, includes all participants who make a sale of The Company products within the one year period. This estimate is subject to change after the first six months of our operation in Canada and will be updated annually thereafter. This “typical” figure is representative of the smallest range of compensation expected to be earned by over 50% of all participants in the plan.” NWA Canada does not guaranty the income of any person or entity participating in its program. Incomes earned will be in direct proportion to the time and effort put forth by each participant in the program.

# Your possible earnings

## MARGIN

2

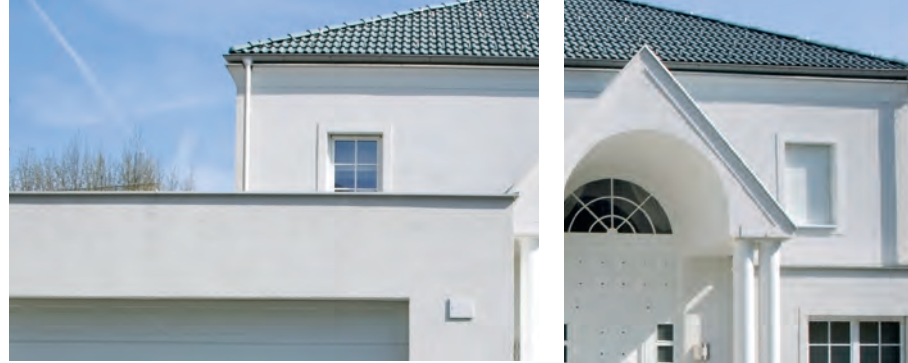


Sample calculation

**Bonus from the first Dollar sales onwards!** 

## BONUS RATE

LEVEL I basic				
		PV	Level	
1	-	499	3 %	
500	-	999	6 %	
1,000	-	1,999	9 %	
2,000	-	3,999	12 %	
4,000	-	7,999	15 %	car concept level I*
8,000	-	11,999	18 %	
from 12,000			21 %	
from 16,000		Junior Team Manager		
from 20,000		Team Manager	car concept level II**	



## LEVEL BONUS

LEVEL II			
Qualification		Bonus	Level
from	Team Manager	5 %	1st level
from	1 x 21% downline	4 %	2nd level
from	2 x 21% downlines	3 %	3rd level
from	3 x 21% downlines	3 %	4th level
from	4 x 21% downlines	4 %	5th level
from	8 x 21% downlines	4 %	6th level

Bonus entitlement		
The bonus entitlement always applies to all qualified 15% downlines of the corresponding level.		
from 1 PV up to 3,999 PV remaining sales	=	No entitlement to level bonus
from 4,000 PV up to 5,999 PV remaining sales	=	50% entitlement to level bonus
from 6,000 PV remaining sales	=	Full level bonus
from 4 x 21% downlines	=	Full level bonus from 1 PV



## DEPTHBONUS

4

### LEVEL III

**Bonus**

**21%-er**

**Vice President bonus**

**from 10 x 21% downlines**

**1 %**

**President bonus**

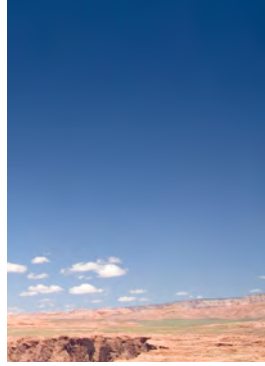
**from 12 x 21% downlines**

**1 %**

### Bonus entitlement

From Vice President or President level onwards there is an entitlement to the corresponding depth bonus on the entire downline up to the next qualification.





## ANNUAL BONUS

5

LEVEL IV		
PV		Level
from	2 m total sales	1.00 %
from	4 m total sales	1.25 %
from	6 m total sales	1.50 %
from	8 m total sales	1.75 %
from	10 m total sales	2.00 %

**Bonus entitlement**

From the achieved sales amount to the next qualifier.  
Differences between the annual bonus levels are paid out.



# Titles and qualifications








<b>15%-er</b>	<b>4000 PV total sales incl. personal sales without qualifiers.</b>	NWA Academy Part I is performed by the Silver Manager – weekend seminar for first qualification
<b>21%-er</b>	<b>12,000 PV total sales incl. personal sales without qualifiers.</b>	NWA Academy Part II in Ahlen – weekend seminar for first qualification
<b>Junior Team Manager</b>	<b>16,000 PV total sales incl. personal sales without qualifiers + 5 downlines eligible for bonuses or, with one or more 21% downlines, 6,000 PV remaining sales</b>	
<b>Team Manager</b>	<b>20,000 PV total sales incl. personal sales without qualifiers + 10 downlines eligible for bonuses or, with one or more 21% downlines, 12,000 PV remaining sales</b>	
<b>Manager</b>	<b>At least 1 x 21% downline + 10 downlines eligible for bonuses and one remaining area amounting to 12,000 PV</b>	
<b>Bronze Manager</b>	<b>At least 2 x 21% downlines + 10 downlines eligible for bonuses and one remaining area amounting to 12,000 PV</b>	
<b>Silver Manager</b>	<b>At least 4 x 21% downlines</b>	
<b>Gold Manager</b>	<b>At least 6 x 21% downlines</b>	
<b>Platinum Manager</b>	<b>At least 8 x 21% downlines</b>	
<b>Vice President</b>	<b>At least 10 x 21% downlines</b>	
<b>President</b>	<b>At least 12 x 21% downlines</b>	
<b>* President</b>	<b>At least 12 x 21% downlines + at least 1 x Gold Manager line</b>	
<b>** President</b>	<b>At least 12 x 21% downlines + at least 2 x Gold Manager downlines</b>	
<b>*** President</b>	<b>At least 12 x 21% downlines + at least 3 x Gold Manager downlines</b>	
<b>**** President</b>	<b>At least 12 x 21% downlines + at least 4 x Gold Manager downlines</b>	



Vehicles country-specific!

## CAR CONCEPT AND TRAVEL SEMINARS

### CAR CONCEPT

Level	Qualification
<b>Level I</b> 15%-er	 <b>4000 PV total sales</b> incl. personal sales without qualifiers.
<b>Level II</b> Team Manager	 <b>20,000 PV total sales</b> + 10 downlines eligible for bonuses
<b>Level III</b> Silver Manager	 <b>4 x 21% downlines</b>
<b>Level IV</b> Platinum Manager	 <b>8 x 21% downlines</b>
<b>Level V</b> President	 <b>12 x 21% downlines</b>



For more information about the car concept for your country, see [www.my-nwa.com](http://www.my-nwa.com)



### TRAVEL SEMINARS

We are starting our travel seminars in 2011 with journeys to the most beautiful places in the world. **Unlike in other schemes, with us you have a choice!**



Adventure in Colorado



Caribbean cruise



Family holiday in Dubai

# Think bigger Think NWA



Statutory Declaration Pursuant to Sections 55 – 55.1 of the Competition Act of Canada

“There are no guarantees regarding income. Our estimate of what the typical participant is likely to earn is approximately \$1.420 per year. A participant, for the purposes of this estimate, includes all participants who make a sale of The Company products within the one year period. This estimate is subject to change after the first six months of our operation in Canada and will be updated annually thereafter. This “typical” figure is representative of the smallest range of compensation expected to be earned by over 50% of all participants in the plan.” NWA Canada does not guaranty the income of any person or entity participating in its program. Incomes earned will be in direct proportion to the time and effort put forth by each participant in the program.

NWA Canada Corporation, Canada

A subsidiary of Altishofen/Switzerland, Kantonsstrasse 1, CH-6246 Altishofen, Switzerland